

382W



PN40

Valvole a sfera maschio/femmina con sistema antilegionella e premi-stoppa in PTFE Male/female ball valves with anti-legionella system and PTFE packing gland

MADE IN ITALY



NICHELATE
ESTERNAMENTE
EXTERNALLY
NICKEL-PLATED

ACQUA POTABILE
DRINKING WATER

PASSAGGIO TOTALE
FULL BORE

Per impianti idrotermosanitari, adatte al trattamento di acque sanitarie potabili destinate al consumo umano. Omologate secondo la norma EN 13828 foglio di lavoro DVGW W570.

For plumbing and heating systems, suitable for the treatment of drinking water for human consumption. Approved according to standard EN 13828 worksheet DVGW W570.

Pressione di esercizio: vedi tabelle

Temperatura di esercizio: -30°C +150°C (gelo escluso)

Filetti cilindrici secondo norma ISO 228-1

Tenuta sull'asta:

- da 1/2" a 2" asta assemblata dall'interno con 1 OR in EPDM Perox, premistoppa in PTFE, e regolabile con ghiera;
- 1/4" e 3/8" asta assemblata dall'esterno con premistoppa in PTFE e regolabile con ghiera.

Tenuta sulla sfera con 2 sedi in PTFE

Passaggio totale

Working pressure: see tables

Working temperature: -30°C +150°C (no frost)

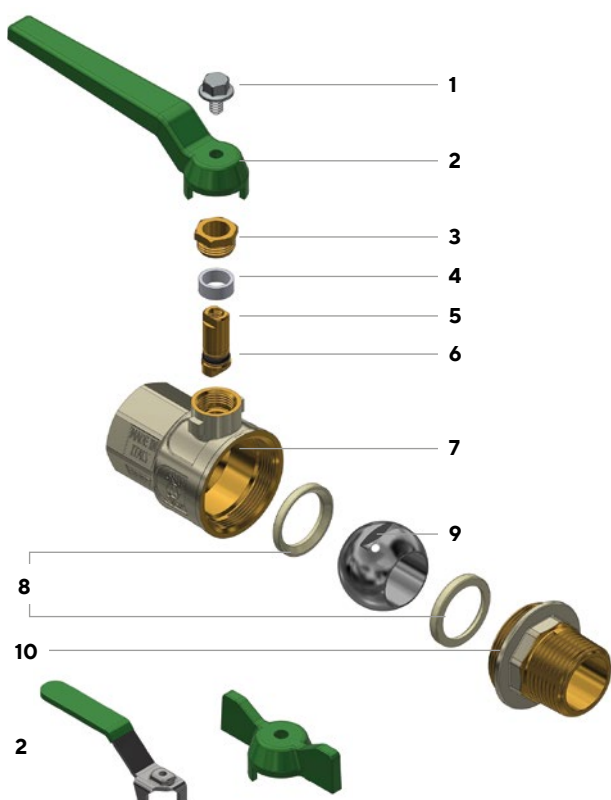
Cylindrical threads according to ISO 228-1

Seal on the stem:

- from 1/2" to 2" stem assembled from inside with 1 OR in EPDM Perox PTFE gasket and adjustable screw gland;
- 1/4" and 3/8" stem assembled from outside PTFE gasket and adjustable screw gland;

Seal on the ball with 2 gaskets in PTFE

Full bore



- 1 Vite in AISI 430
- 2 Leve disponibili: vedi tabelle seguenti
- 3 Ghiera in CW614N UNI EN 12164
- 4 Premistoppa in PTFE
- 5 Asta in CW614N UNI EN 12164
- 6 O-ring in EPDM PEROX
- 7 Corpo valvola in CW617N UNI-EN12165 nichelato sulla superficie esterna
- 8 Sede di tenuta in PTFE
- 9 Sfera cromata in CW617N UNI-EN12165
- 10 Manicotto in CW617N UNI-EN12165

- 1 AISI 430 screw
- 2 Available levers: see following tables
- 3 CW614N UNI EN 12164 packing gland
- 4 PTFE ring seal
- 5 CW614N UNI EN 12164 stem
- 6 EPDM PEROX o-ring
- 7 CW617N UNI-EN12165 body valve, nickel-plated on the external surface
- 8 PTFE gasket
- 9 CW617N UNI-EN12165 chrome-plated ball
- 10 CW617N UNI-EN12165 end adaptor, nickel-plated on the external surface

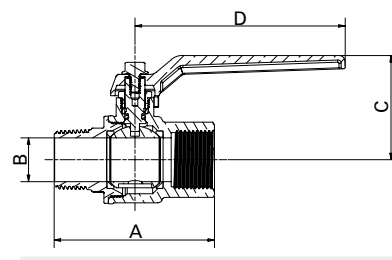




Con leva in alluminio
With aluminium lever



ACQUA POTABILE
DRINKING WATER



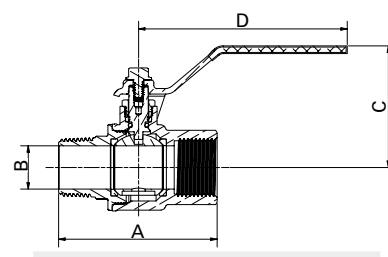
Attacchi Connections	Codice prodotto Product code	PN	A ±1mm	B mm	C mm	D mm	Conf. num. pezzi Pack. num. pieces
1/4"	382WB14G5V	40	53,5	11	41	95	-
3/8"	382WC38G5V	40	53,5	11	41	95	12/144
1/2"	382WD12G5V	60	63,5	15	43,5	95	10/120
3/4"	382WE34G5V	60	72,5	20	47	95	6/72
1"	382WF001G5V	40	86	25	62,5	115	4/48
1" 1/4	382WG114G5V	40	101,5	32	67,5	115	10
1" 1/2	382WH112G5V	40	109,5	40	80	165	10
2"	382WI002G5V	40	133,5	50	88	165	10



Con leva piatta in acciaio INOX AISI 304
With INOX AISI 304 steel flat lever



ACQUA POTABILE
DRINKING WATER



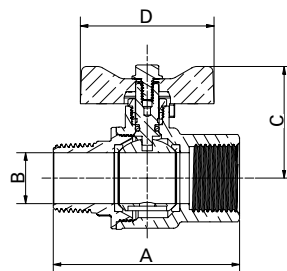
Attacchi Connections	Codice prodotto Product code	PN	A ±1mm	B mm	C mm	D mm	Conf. num. pezzi Pack. num. pieces
1/4"	382WB14G4V	40	53,5	11	41	95	-
3/8"	382WC38G4V	40	53,5	11	41	95	12/144
1/2"	382WD12G4V	60	63,5	15	43,5	95	10/120
3/4"	382WE34G4V	60	72,5	20	47	95	6/72
1"	382WF001G4V	40	86	25	60,5	115	4/48
1" 1/4	382WG114G4V	40	101,5	32	65,5	115	10
1" 1/2	382WH112G4V	40	109,5	40	77,5	165	10
2"	382WI002G4V	40	133,5	50	85,5	165	10



Con farfalla in alluminio "T"
Aluminium "T" handle



ACQUA POTABILE
DRINKING WATER



Attacchi Connections	Codice prodotto Product code	PN	A ±1mm	B mm	C mm	D mm	Conf. num. pezzi Pack. num. pieces
1/4"	382WB14G6V	40	53,5	11	37,5	52	-
3/8"	382WC38G6V	40	53,5	11	37,5	52	12/144
1/2"	382WD12G6V	60	63,5	15	39,5	52	10/120
3/4"	382WE34G6V	60	72,5	20	43,5	52	6/72
1"	382WF001G6V	40	86	25	51,5	65	4/48

