

374



Valvole a sfera maschio/maschio Male/male ball valves

ACQUA POTABILE
DRINKING WATER

PASSAGGIO TOTALE
FULL BORE

Per impianti idrotermosanitari, adatte al consumo di acqua potabile. Installazione in impianti di media pressione di riscaldamento industriale, civile, impianti pneumatici, per fluidi non aggressivi.

For plumbing-heating systems and drinking water consumption. Installation in medium pressure industrial and civil heating systems, pneumatic systems and for non-aggressive fluids.

PN25


MADE IN ITALY



NICHELATE
ESTERNAMENTE
EXTERNALLY
NICKEL-PLATED

Pressione di esercizio: 25 bar

Temperatura di esercizio: -20°C +130°C
(gelo escluso)

Filetti cilindrici secondo norma ISO 228-1

Tenuta sull'asta: asta assemblata dall'interno con 2 OR in EPDM PEROX

Tenuta sulla sfera con 2 sedi in PTFE

Passaggio totale

Working pressure: 25 bar

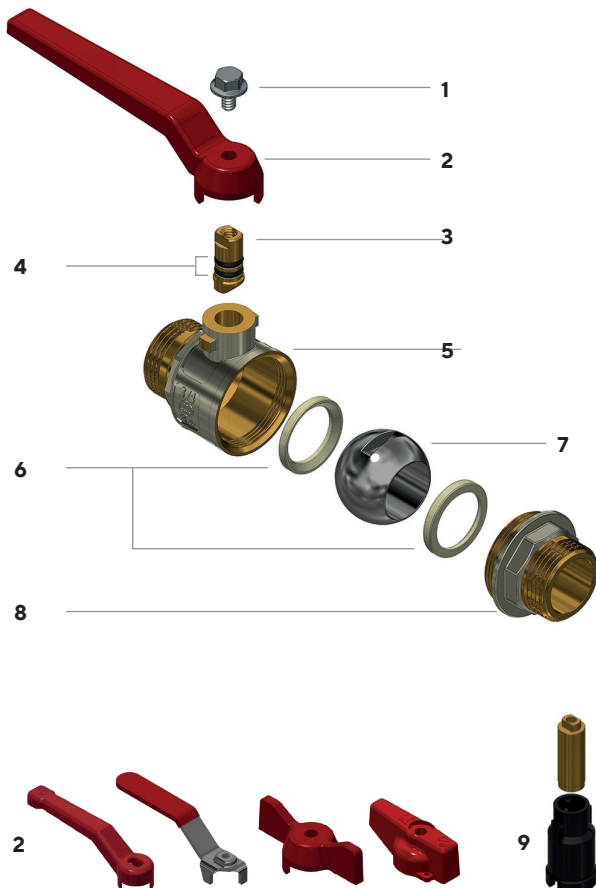
Working temperature: -20°C +130°C (no frost)

Cylindrical threads according to ISO 228-1

Seal on stem: stem assembled from inside with 2 EPDM PEROX OR

Seal on the ball with 2 PTFE gaskets

Full bore



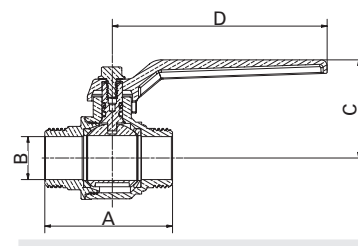
- 1 Vite in Fe-Zn/Bn o in acciaio AISI 430
- 2 Leve disponibili: vedi tabelle seguenti
- 3 Asta in CW614N UNI EN 12164
- 4 O-ring in EPDM PEROX
- 5 Corpo valvola CW617N UNI EN 12165 nichelato solo sulla superficie esterna
- 6 Sede in PTFE
- 7 Sfera in CW617N UNI EN 12165 cromata
- 8 Manicotto CW617N UNI EN 12165 nichelato solo sulla superficie esterna
- 9 Per versioni 1/2" e 3/4" canotto prolunga in plastica PA6 caricata 50% fibra di vetro, per la versione da 1" in CW617N UNI EN 12165 nichelato



- 1 Fe-Zn/Bn or AISI 430 steel screw
- 2 Available levers: see following tables
- 3 CW614N UNI EN 12164
- 4 EPDM PEROX O-ring
- 5 CW617N UNI EN 12165 body valve, nickel-plated on the external surface
- 6 PTFE gasket
- 7 CW617N UNI EN 12165 chrome-plated ball
- 8 CW617N UNI EN 12165 end adaptor, nickel-plated on the external surface
- 9 For 1/2" and 3/4" versions extension made of plastic sleeve PA6 loaded 50% glass fibre, for the 1" version of nickel-plated CW617N UNI EN 12165



Con leva in alluminio
With aluminium lever

ACQUA POTABILE
 DRINKING WATER

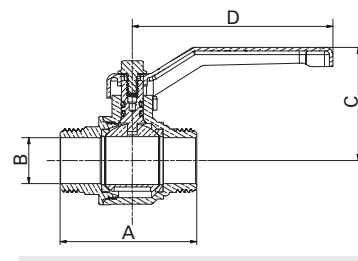




Attacchi Connections	Codice prodotto Product code		PN	A ±1mm	B mm	C mm	D mm	Conf. num. pezzi Pack. num. pieces
								
1/2"	374D1/2G5R	374D1/2G5B	25	51	15	40,5	95	12/144
3/4"	374E3/4G5R	374E3/4G5B	25	57	20	43,5	95	8/96
1"	374F001G5R	374F001G5B	25	68,5	25	59,5	115	4/48



Con leva in acciaio imbutita
With drawn steel lever

ACQUA POTABILE
 DRINKING WATER

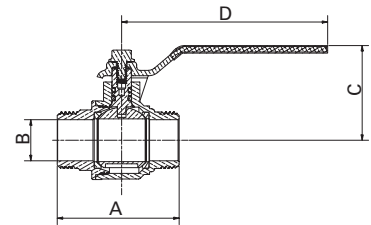




Attacchi Connections	Codice prodotto Product code		PN	A ±1mm	B mm	C mm	D mm	Conf. num. pezzi Pack. num. pieces
								
1/2"	374D1/2G1R	374D1/2G1B	25	51	15	42,5	83	12/144
3/4"	374E3/4G1R	374E3/4G1B	25	57	20	46	83	8/96
1"	374F001G1R	374F001G1B	25	68,5	25	67	90	4/48

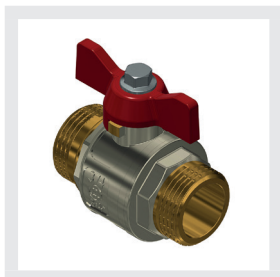


Con leva piatta in acciaio INOX AISI 304
 With AISI 304 stainless steel flat lever

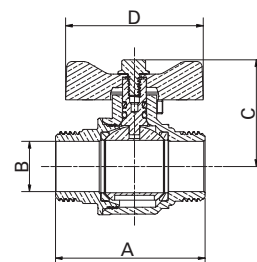
ACQUA POTABILE
 DRINKING WATER





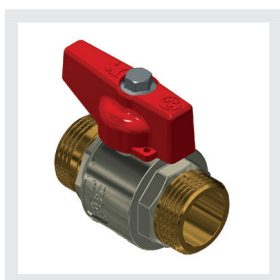
Attacchi Connections	Codice prodotto Product code		PN	A ±1mm	B mm	C mm	D mm	Conf. num. pezzi Pack. num. pieces
								
1/2"	374D1/2G4R	374D1/2G4B	25	51	15	40,5	95	12/144
3/4"	374E3/4G4R	374E3/4G4B	25	57	20	43,5	95	8/96
1"	374F001G4R	374F001G4B	25	68,5	25	59,5	115	3/36



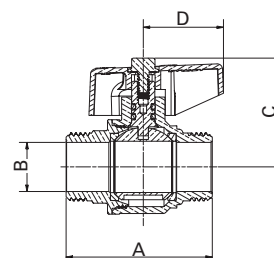
Con farfalla in alluminio "T"
With aluminium "T" handle





Attacchi Connections	Codice prodotto Product code		PN	A ±1mm	B mm	C mm	D mm	Conf. num. pezzi Pack. num. pieces
								
1/2"	374D1/2G6R	374D1/2G6B	25	51	15	36,5	52	10/120
3/4"	374E3/4G6R	374E3/4G6B	25	57	20	39,5	52	8/96
1"	374F001G6R	374F001G6B	25	68,5	25	50,5	65	4/48



Con manopola in alluminio
With aluminium knob

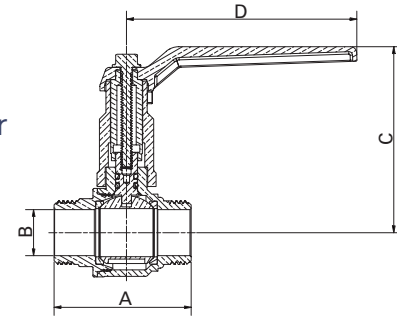




Attacchi Connections	Codice prodotto Product code		PN	A ±1mm	B mm	C mm	D mm	Conf. num. pezzi Pack. num. pieces
								
1/2"	374D1/2G2R	374D1/2G2B	25	51	15	36,5	31,5	10/120
3/4"	374E3/4G2R	374E3/4G2B	25	57	20	39,5	31,5	8/96
1"	374F001G2R	374F001G2B	25	68,5	25	53	42,5	4/48



Con prolunga e leva in alluminio With extension stem and aluminium lever

Per versioni 1/2" e 3/4" canotto prolunga in plastica PA6 caricata 50% fibra di vetro, per la versione da 1" in CW617N UNI EN 12165 nichelato.
For 1/2" and 3/4" versions extension made of plastic sleeve PA6 loaded 50% glass fibre, for the 1" version of nickel-plated CW617N UNI EN 12165.

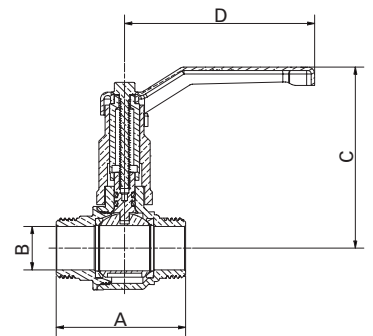




Attacchi Connections	Codice prodotto Product code		PN	A ±1mm	B mm	C mm	D mm	Conf. num. pezzi Pack. num. pieces
								
1/2"	374D1/2G5RFM	374D1/2G5BFM	25	51	15	73,7	95	40
3/4"	374E3/4G5RF	374E3/4G5BF	25	57	20	76,7	95	30
1"	374F001G5RF	374F001G5BF	25	68,5	25	99	115	30



Con prolunga e leva in acciaio imbutita With extension stem and drawn steel lever

Per versioni 1/2" e 3/4" canotto prolunga in plastica PA6 caricata 50% fibra di vetro, per la versione da 1" in CW617N UNI EN 12165 nichelato.
For 1/2" and 3/4" versions extension made of plastic sleeve PA6 loaded 50% glass fibre, for the 1" version of nickel-plated CW617N UNI EN 12165.

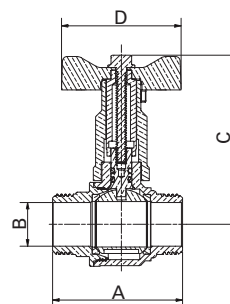




Attacchi Connections	Codice prodotto Product code		PN	A ±1mm	B mm	C mm	D mm	Conf. num. pezzi Pack. num. pieces
								
1/2"	374D1/2G1RFM	374D1/2G1BFM	25	51	15	76,2	83	40
3/4"	374E3/4G1RF	374E3/4G1BF	25	57	20	79,2	83	30
1"	374F001G1RF	374F001G1BF	25	68,5	25	104	90	30



Con prolunga e farfalla in alluminio "T"
With extension stem and aluminium "T" handle

Per versioni 1/2" e 3/4" canotto prolunga in plastica PA6 caricata 50% fibra di vetro, per la versione da 1" in CW617N UNI EN 12165 nichelato.
 For 1/2" and 3/4" versions extension made of plastic sleeve PA6 loaded 50% glass fibre, for the 1" version of nickel-plated CW617N UNI EN 12165.

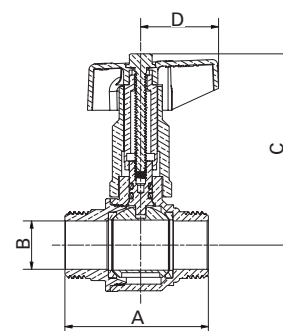




Attacchi Connections	Codice prodotto Product code		PN	A ±1mm	B mm	C mm	D mm	Conf. num. pezzi Pack. num. pieces
								
1/2"	374D1/2G6RFM	374D1/2G6BFM	25	51	15	70	52	10/120
3/4"	374E3/4G6RF	374E3/4G6BF	25	57	20	73	52	8/96
1"	374F001G6RF	374F001G6BF	25	68,5	25	88	65	4/48



Con prolunga e manopola in alluminio
With extension stem and aluminium knob

Per versioni 1/2" e 3/4" canotto prolunga in plastica PA6 caricata 50% fibra di vetro, per la versione da 1" in CW617N UNI EN 12165 nichelato.
 For 1/2" and 3/4" versions extension made of plastic sleeve PA6 loaded 50% glass fibre, for the 1" version of nickel-plated CW617N UNI EN 12165.



Attacchi Connections	Codice prodotto Product code		PN	A ±1mm	B mm	C mm	D mm	Conf. num. pezzi Pack. num. pieces
								
1/2"	374D1/2G2RFM	374D1/2G2BFM	25	51	15	70	83	40
3/4"	374E3/4G2RF	374E3/4G2BF	25	57	20	73	83	30
1"	374F001G2RF	374F001G2BF	25	68,5	25	90	90	30